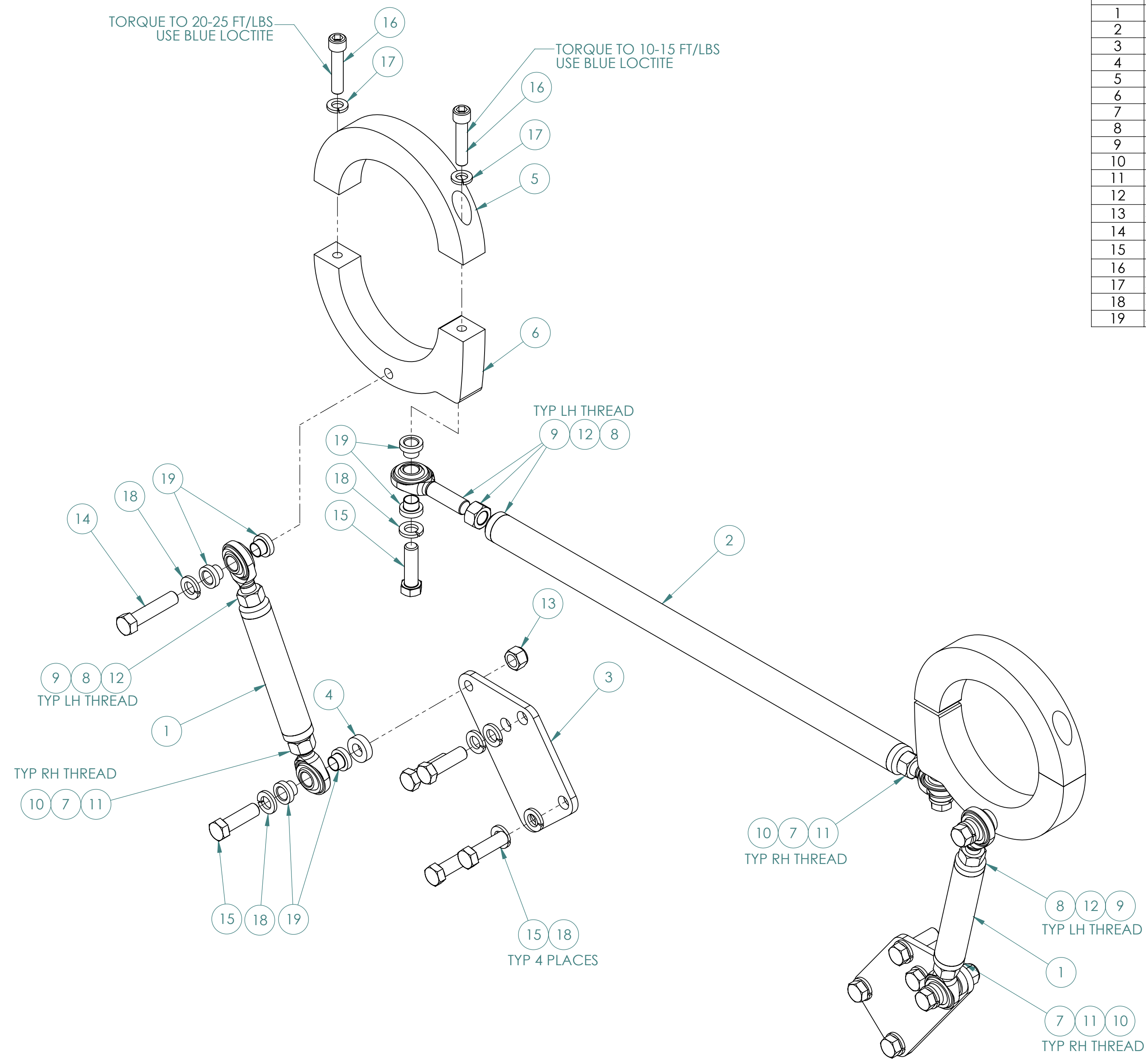


ITEM NO.	PART NUMBER	DESCRIPTION	QTY.
1	21100	1.0 X .065 X 4.50 LG	2
2	21100	1.0 X .065 WALL X 18.0 IN LONG	1
3	28013	PLATE, SUPPORT, 5-HOLE	2
4	28014	SPACER, 304 ST. ST.	2
5	28023	4.5" DIA TAIL SUPPORT	2
6	28024	4.5" DIA TAIL SUPPORT	2
7	38001	NIPPLE, 1/2-20 UNF RH THD	3
8	38002	NIPPLE, 1/2-20 UNF LH THD	3
9	38009	SWIVEL EYE - LH 304 ST. ST.	3
10	38011	SWIVEL EYE - RH 304 ST. ST.	3
11	38014	1/2 - 20 NUT	3
12	38016	1/2 - 20 NUT L.H.	3
13	38081	7/16 - 14 SS NYLON INSERT LOCKNUT	2
14	38082	7/16 - 14 X 2.0 UNC BOLT	2
15	38083	7/16-14 X 1.5 UNC BOLT	12
16	38084	3/8-16 X 1.75 SHCS	2
17	38086	3/8 LOCK WASHER	2
18	38087	7/16 LOCK WASHER	14
19	50002	BUSHING, CLEVIS EYE	12

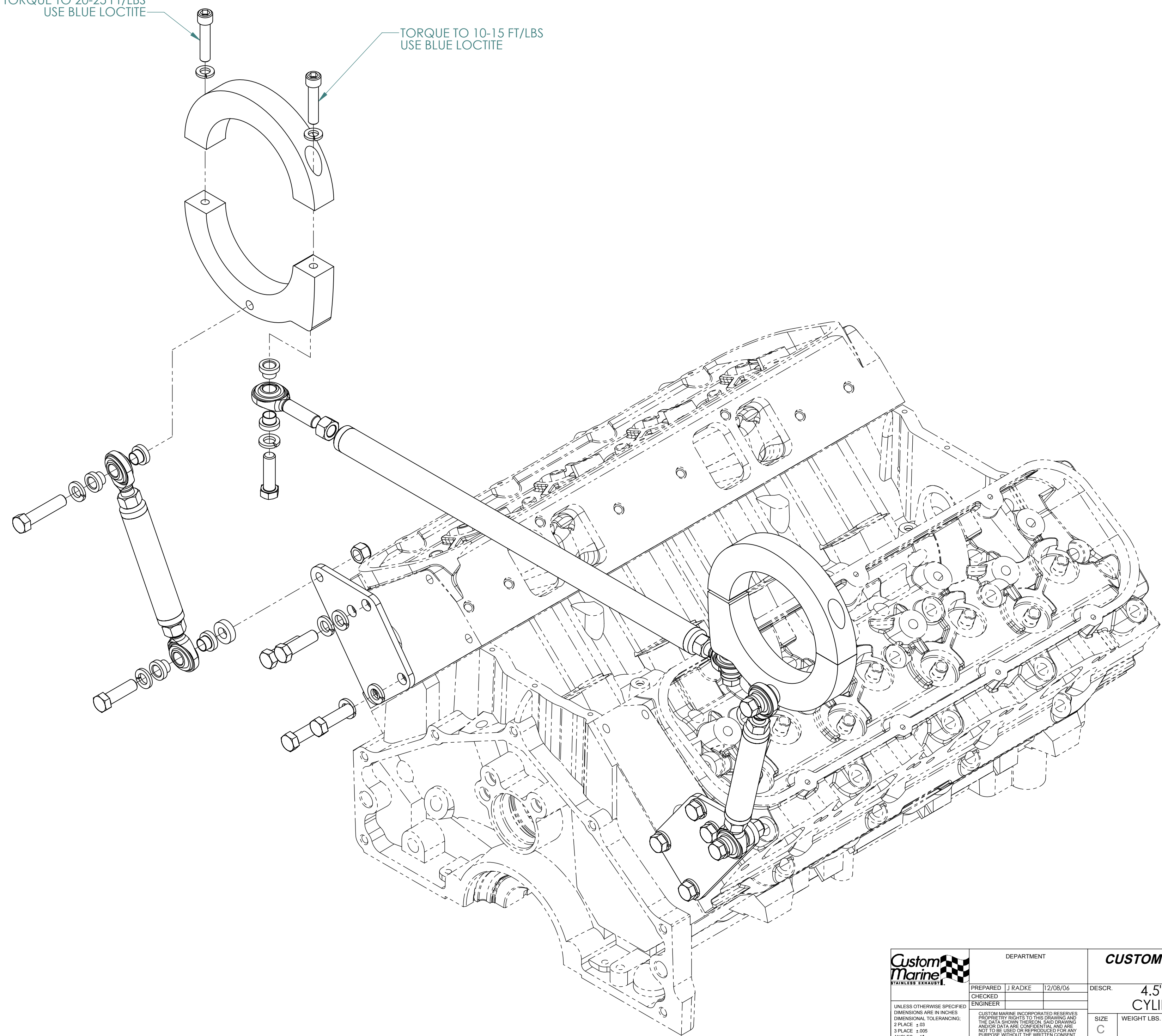


	DEPARTMENT	<b>CUSTOM MARINE INCORPORATED</b> NEENAH, WI	
	PREPARED CHECKED ENGINEER	J RADKE 12/08/06	DESCR. <b>4.5" DIA CLAMP-ON, CYLINDER HEAD MOUNT</b>
UNLESS OTHERWISE SPECIFIED DIMENSIONS ARE IN INCHES DIMENSIONAL TOLERANCING: 2 PLACE ±.03 3 PLACE ±.005 ANGLES ±1°	SIZE <b>C</b>	WEIGHT LBS.	DWG. NO. <b>13000</b>
DO NOT SCALE DRAWING	THIRD ANGLE PROJECTION	SCALE 1:8	MATERIAL: SHEET 1 OF 2

ENR #	REV.	DESCRIPTION	BY	CK'D BY	DATE
0100	A	RELEASED FOR PRODUCTION	JJR		12/08/06

TORQUE TO 20-25 FT/LBS  
USE BLUE LOCTITE

TORQUE TO 10-15 FT/LBS  
USE BLUE LOCTITE



	DEPARTMENT		<b>CUSTOM MARINE INCORPORATED</b>		
	NEENAH, WI				
PREPARED J RADKE 12/08/06 CHECKED ENGINEER	DESCR.		4.5" DIA CLAMP-ON, CYLINDER HEAD MOUNT		
UNLESS OTHERWISE SPECIFIED DIMENSIONS ARE IN INCHES DIMENSIONAL TOLERANCING: 2 PLACE ±.03 3 PLACE ±.005 ANGLES ±1°	CUSTOM MARINE INCORPORATED RESERVES PROPRIETARY RIGHTS TO THIS DRAWING AND THE DATA SHOWN THEREON. SAID DRAWING AND/OR DATA ARE CONFIDENTIAL AND ARE NOT TO BE USED OR REPRODUCED FOR ANY PURPOSE WITHOUT THE WRITTEN CONSENT OF CUSTOM MARINE INCORPORATED.	SIZE C	WEIGHT LBS.	DWG. NO. 13000	REV. A
DO NOT SCALE DRAWING	THIRD ANGLE PROJECTION	SCALE 1:8	MATERIAL:	SHEET 2 OF 2	