

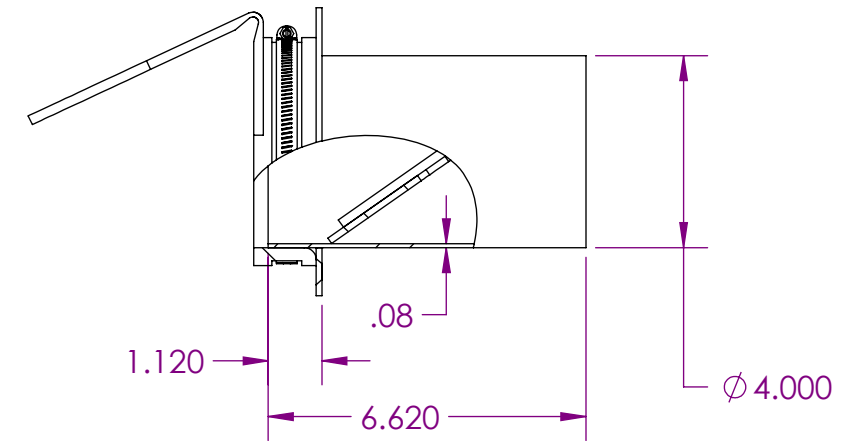
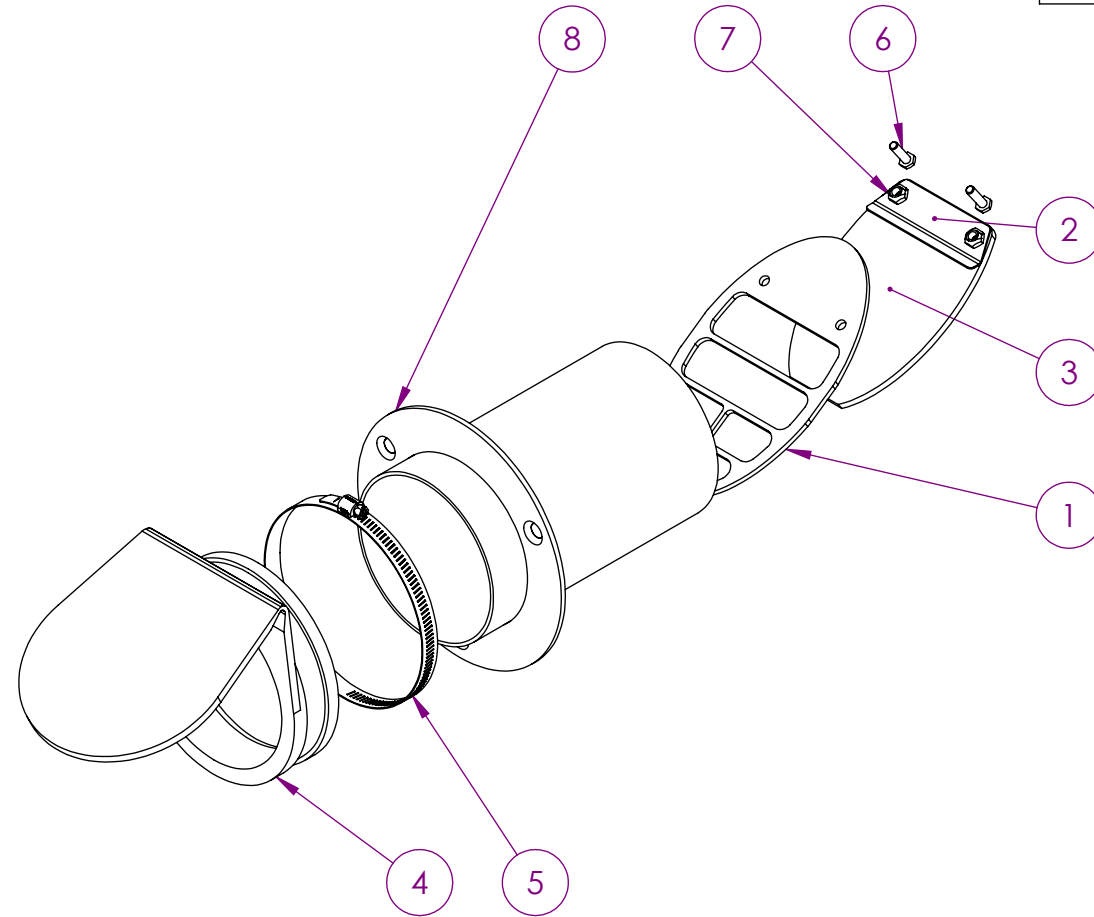
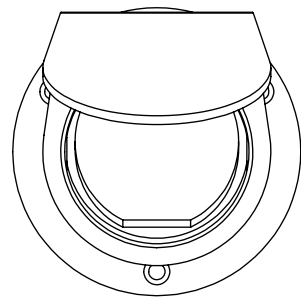
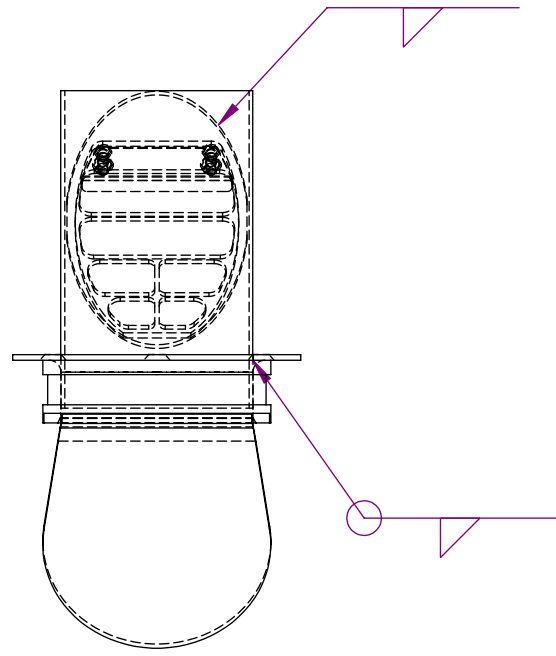
4

3

2

CMI MATERIAL NUMBER

ITEM NO.	PART NUMBER	DESCRIPTION	QTY.
1	25002	MERC WAVE BAFFLE PLATE	1
2	25060	FLAPPER SUPPORT	1
3	34030	FLAPPER, RUBBER - WAVE BAFFLE	1
4	34375	RUBBER COVER	1
5	36041-4.00 INCH	#072 Hose Clamp	1
6	38330	SCREW,316L,10-32X.50,HEX HD	2
7	38680	NUT,316L,SS,10-32,TOPLOCK	2
8	44260	RING, TRANSOM 4"	1



- NOTES-
- 1. MATERIAL-
 - 1. TUBE, 304L, 4"OD, 14GA
 - 2. SOLD AS PAIR OF TIPS
 - 3. REF-
 - 1. EX-1945-200, REV B

REVISIONS					
ECN #	REV.	DESCRIPTION	BY	CHK'D	DATE
1376	A	NEW PRODUCTION PART	AMK		10/27/2017



DEPARTMENT

CUSTOM MARINE INCORPORATED
NEENAH, WI

PREPARED AMK 1/24/17
 CHECKED
 ENGINEER

TIP, 304L, 4"OD, 14GA, SALISBURY PAIR
 ICONIC, EX-1945-200

UNLESS OTHERWISE SPECIFIED
 DIMENSIONS ARE IN INCHES
 DIMENSIONAL TOLERANCING:
 2 PLACE ±.03
 3 PLACE ±.005
 ANGLES ±1°

CUSTOM MARINE INCORPORATED RESERVES
 PROPRIETARY RIGHTS TO THIS DRAWING AND
 THE DATA SHOWN THEREON. SAID DRAWING
 AND/OR DATA ARE CONFIDENTIAL AND ARE
 NOT TO BE USED OR REPRODUCED FOR ANY
 PURPOSE WITHOUT THE WRITTEN CONSENT
 OF CUSTOM MARINE INCORPORATED.

SIZE B WEIGHT LBS. 3.320 DWG. NO. 39083 REV. A

DO NOT SCALE DRAWING

THIRD ANGLE PROJECTION



SCALE 1:4 MATERIAL: ANSI 304L SHEET 1 OF 1

4

3

2

1