

4

3

2

CMI MATERIAL NUMBER

ITEM NO.	PART NUMBER	DESCRIPTION	QTY.
1	19067	PIVOT PLUG, BRASS, .375OD X .185ID	2
2	34335	FLAPPER, SBR70, .25 X 3.80 X 5.03	1
3	24285	TUBE, 304L, 4"OD, .065", 4.67"LG, SIMPLE TIP	1
4	25040	RING, 304L, .125", 6"OD, 4"ID, 5"BC, 4BOLT, NO CS	1

D

D

C

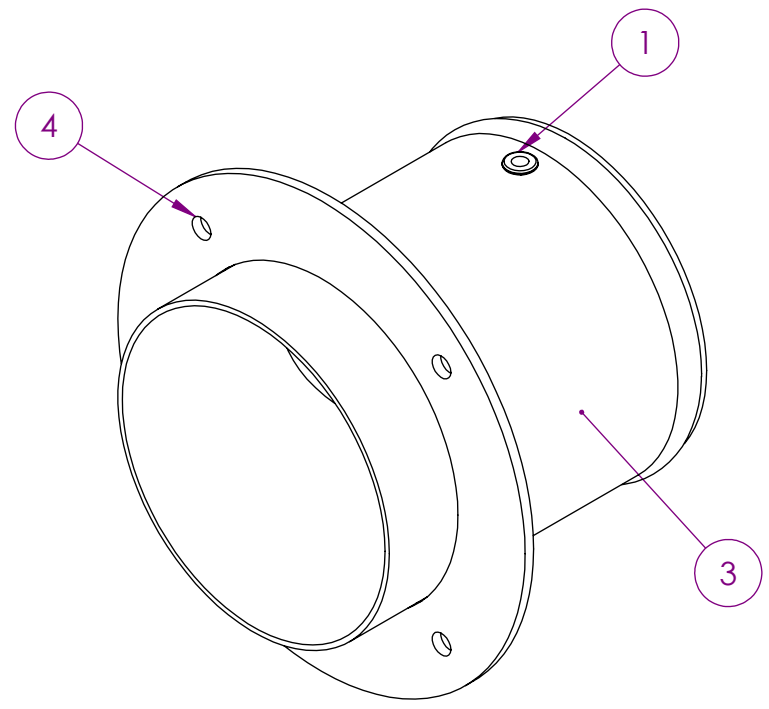
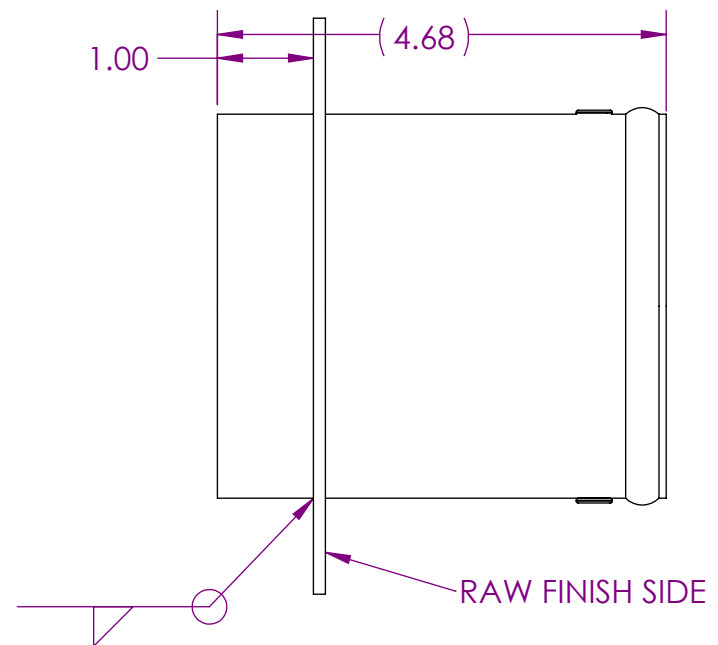
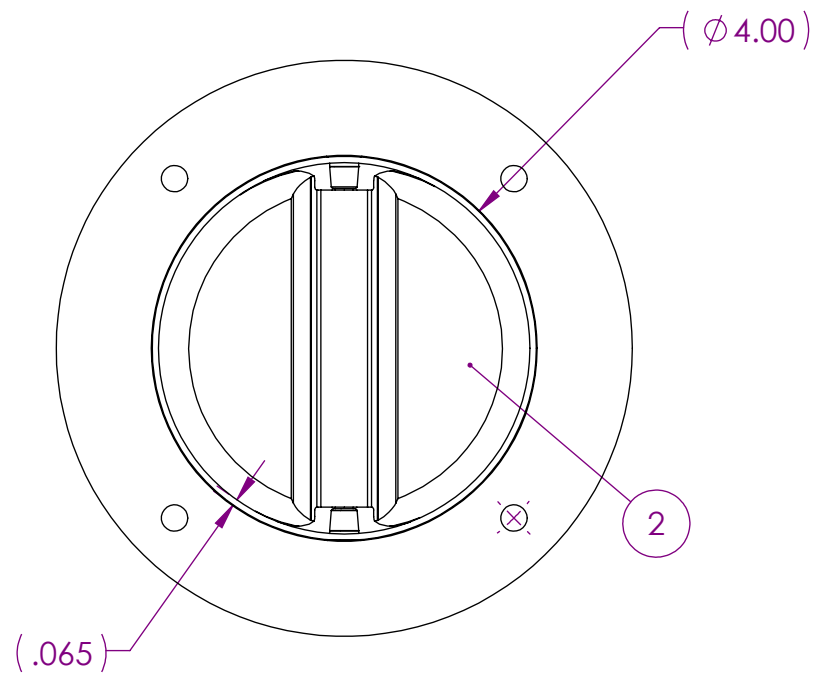
C

B

B

A

A



- NOTES-
- MATERIAL-
 - TUBE, 304L, 4"OD, .065"
 - SHEET 11GA/PLATE .125"
 - FINISH-
 - SATIN FINISH
 - NO PASSIVATION

REVISIONS					
ECN #	REV.	DESCRIPTION	BY	CHK'D	DATE
1589	A	NEW PRODUCTION PART WAS EX-1925-600	TJK		8/29/2019

	DEPARTMENT		CUSTOM MARINE INCORPORATED NEENAH, WI						
	PREPARED	AMK	8/29/19	DESCR					
	CHECKED			TIP, 304L, 4", V-FLAPPER, SIMPLE SATIN FINISH					
UNLESS OTHERWISE SPECIFIED DIMENSIONS ARE IN INCHES DIMENSIONAL TOLERANCING: 2 PLACE ±.03 3 PLACE ±.005 ANGLES ±1°			CUSTOM MARINE INCORPORATED RESERVES PROPRIETARY RIGHTS TO THIS DRAWING AND THE DATA SHOWN THEREON. SAID DRAWING AND/OR DATA ARE CONFIDENTIAL AND ARE NOT TO BE USED OR REPRODUCED FOR ANY PURPOSE WITHOUT THE WRITTEN CONSENT OF CUSTOM MARINE INCORPORATED.	SIZE	WEIGHT LBS.	DWG. NO.	REV.		
DO NOT SCALE DRAWING			THIRD ANGLE PROJECTION	SCALE	1:2	MATERIAL:	ANSI 304L	SHEET	1 OF 1
				B	1.831	39025	A		