



D

C

B

A

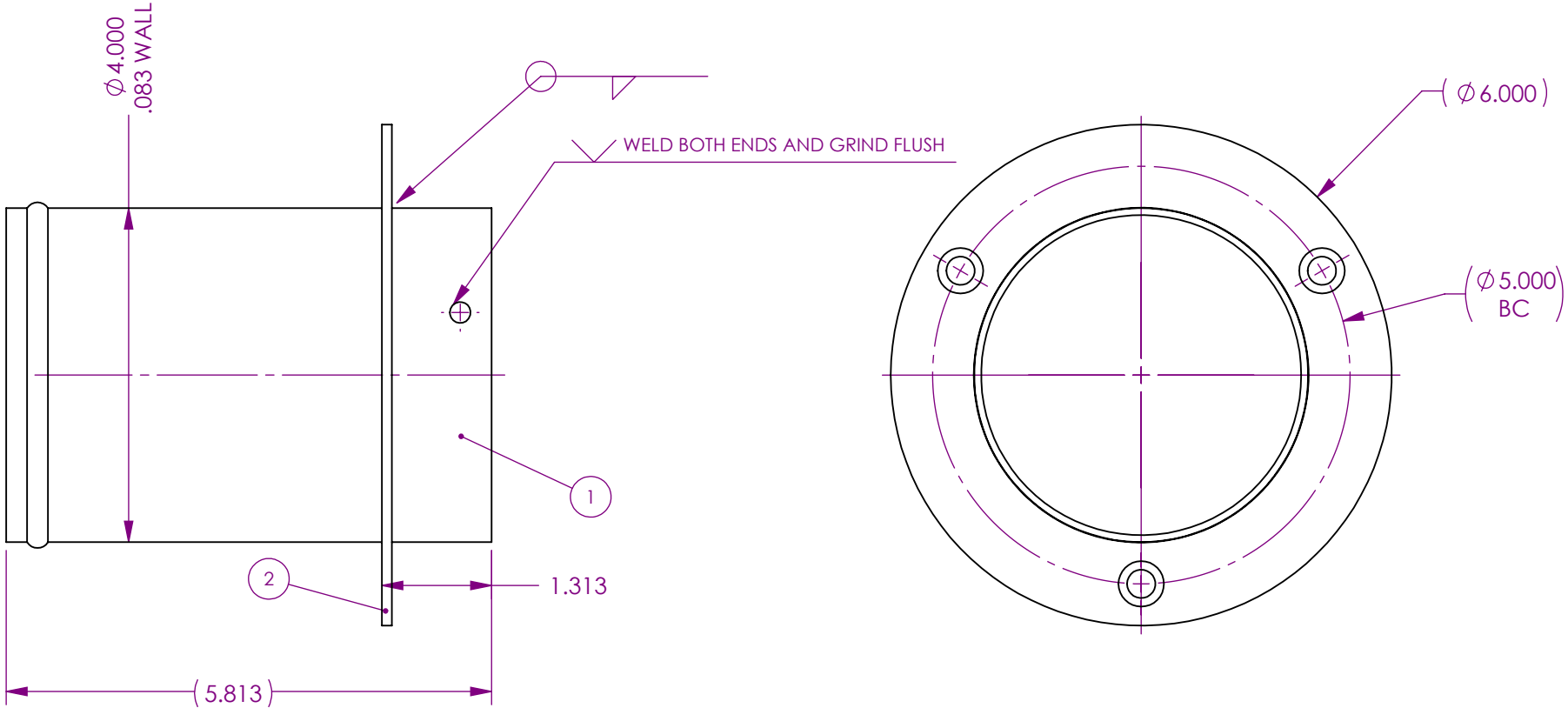
D

C



B

A

CMI MATERIAL NUMBER			
ITEM NO.	Qty.	Part Number	DESCRIPTION
1	1	29781	TRANSOM TUBE
2	1	44260	RING, TRANSOM 4"



NOTE: CROSS HOLE IN TUBE MUST BE  
ALIGNED WITH HOLES IN RING AS SHOWN

 <small>UNLESS OTHERWISE SPECIFIED DIMENSIONS ARE IN INCHES DIMENSIONAL TOLERANCING: 0.X ±.06 0.XX ±.03 0.XXX ±.005 0.XXXX ±.001 ANGLES ±5° BREAK ALL SHARP EDGES SURFACE FINISH: 125 ENGRAVE DWG. NO.</small>	DEPARTMENT			<b>CUSTOM MARINE INCORPORATED</b> NEENAH, WI			
	PREPARED	T.PALMER	11/20/08	DESCR. <b>EXTERNAL TIP DOUBLE FLAPPER</b>			
	CHECKED	.	.				
	ENGINEER	.	.				
	CUSTOM MARINE INCORPORATED RESERVES PROPRIETARY RIGHTS TO THIS DRAWING AND THE DATA SHOWN THEREON. SAID DRAWING AND/OR DATA ARE CONFIDENTIAL AND ARE NOT TO BE USED OR REPRODUCED FOR ANY PURPOSE WITHOUT THE WRITTEN CONSENT OF CUSTOM MARINE INCORPORATED.			SIZE <b>B</b>	WEIGHT LBS.	DWG. NO. <b>39215</b>	REV. <b>B</b>
THIRD ANGLE PROJECTION			MATERIAL:		SHEET <b>2</b> OF <b>2</b>		