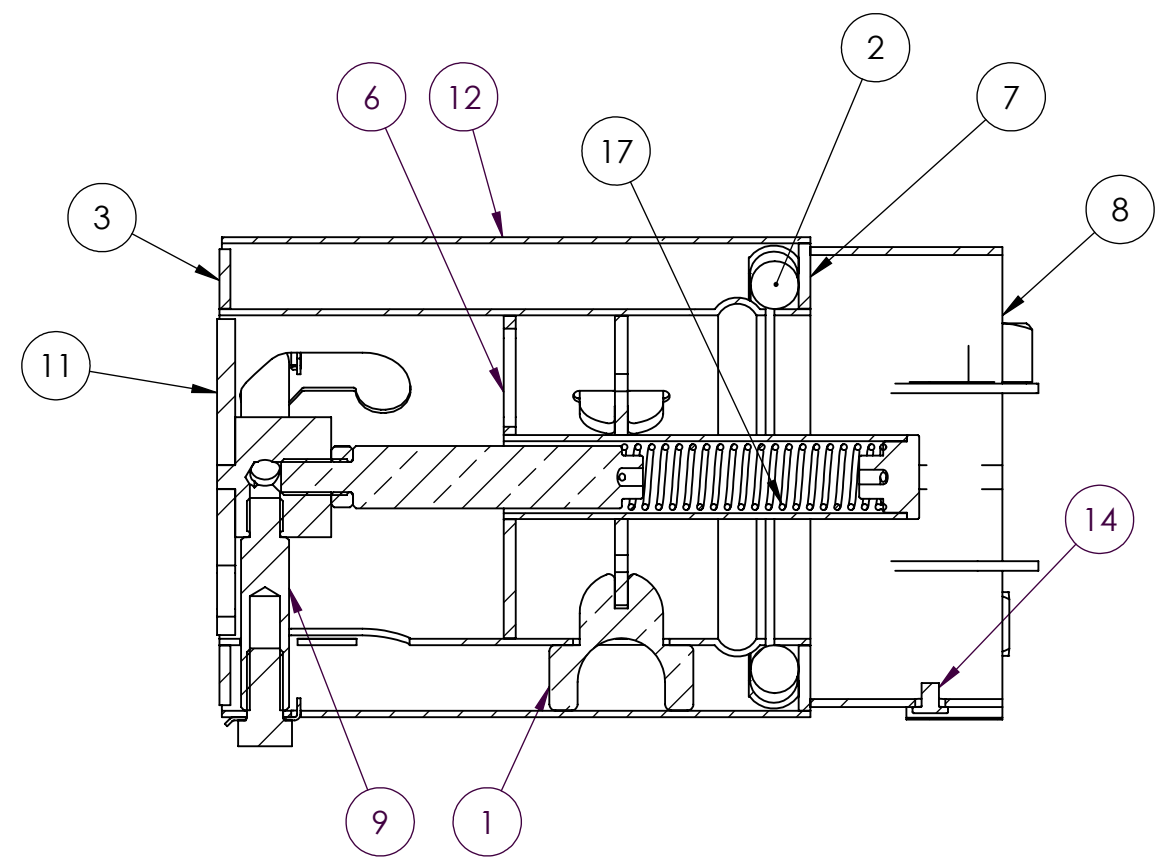
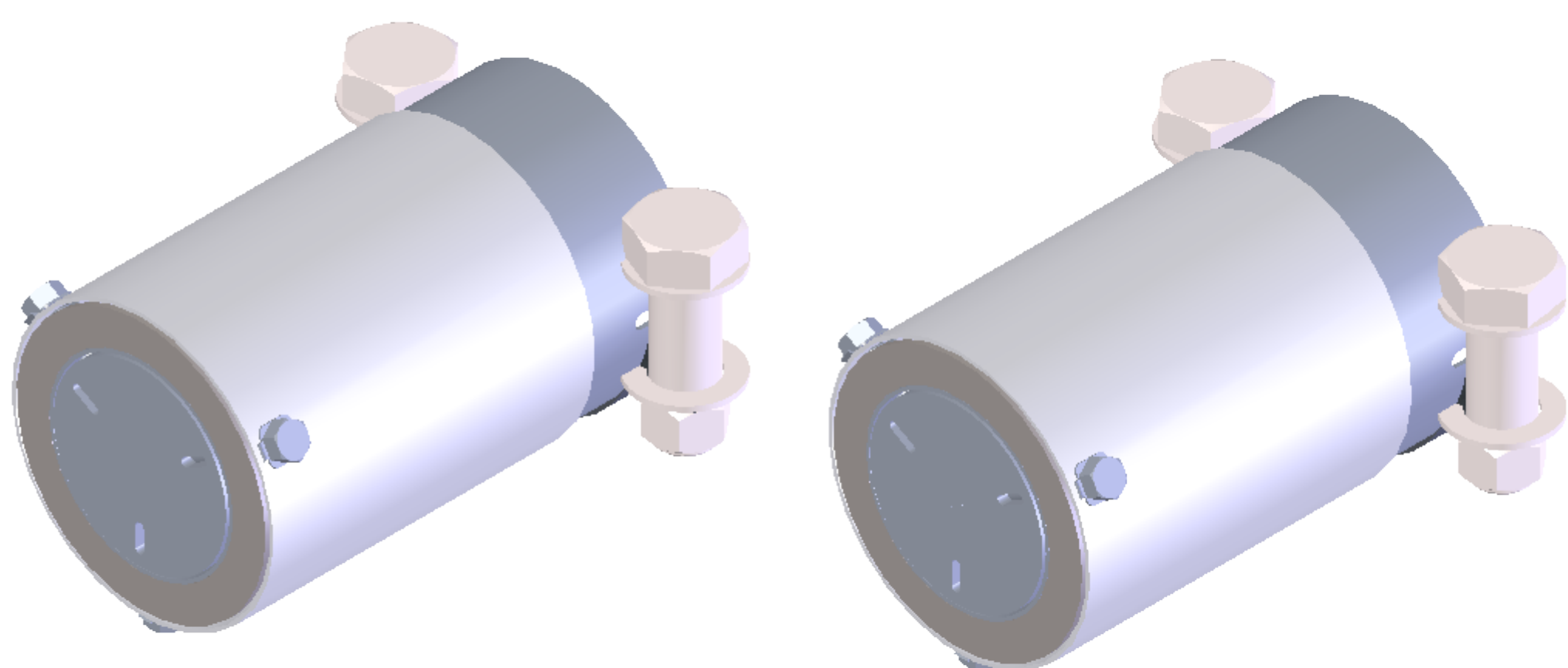


F  
E  
D  
C  
B  
A



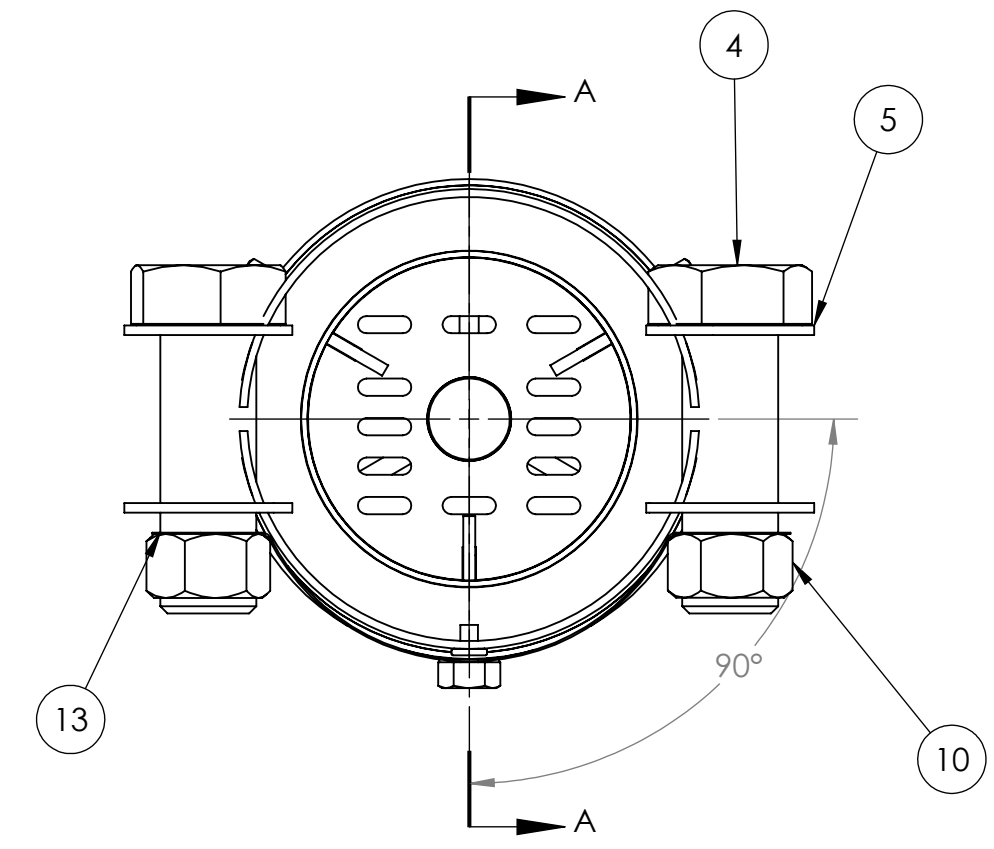
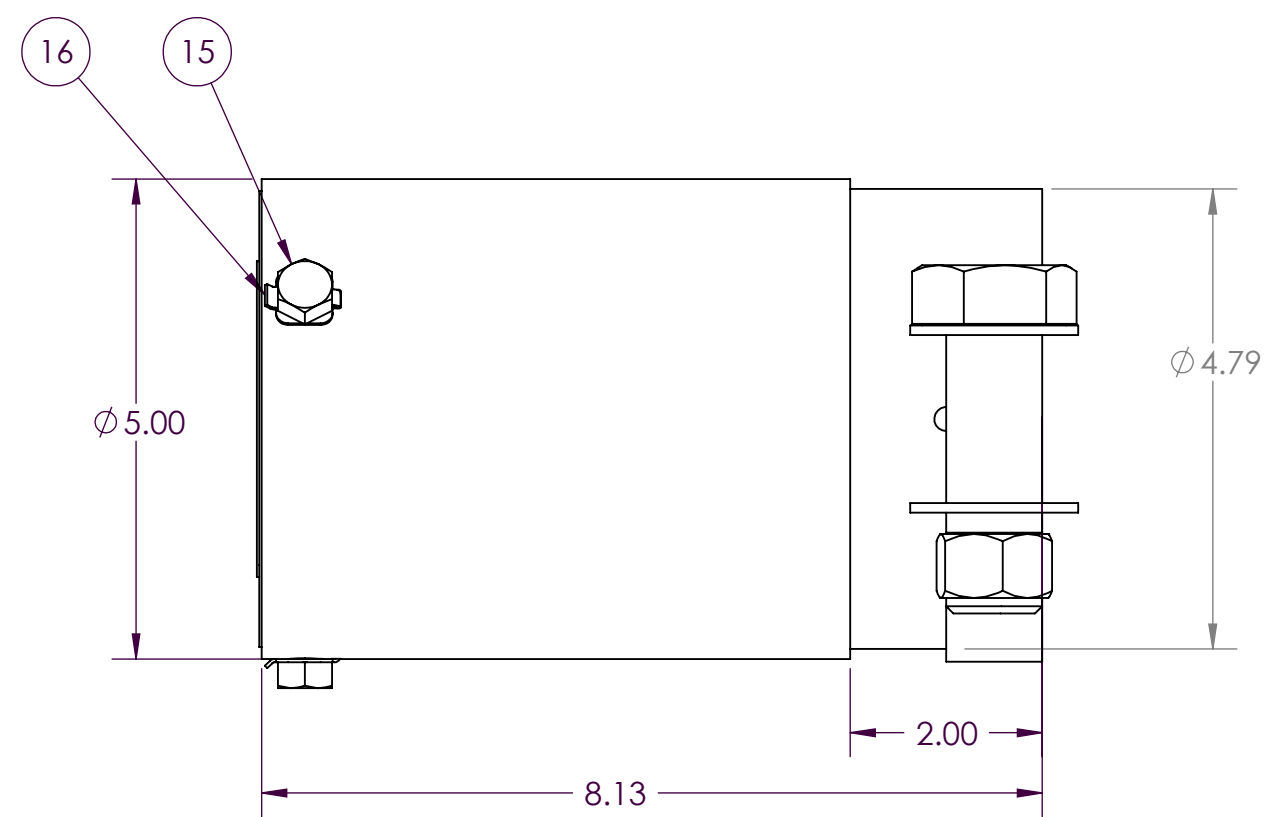
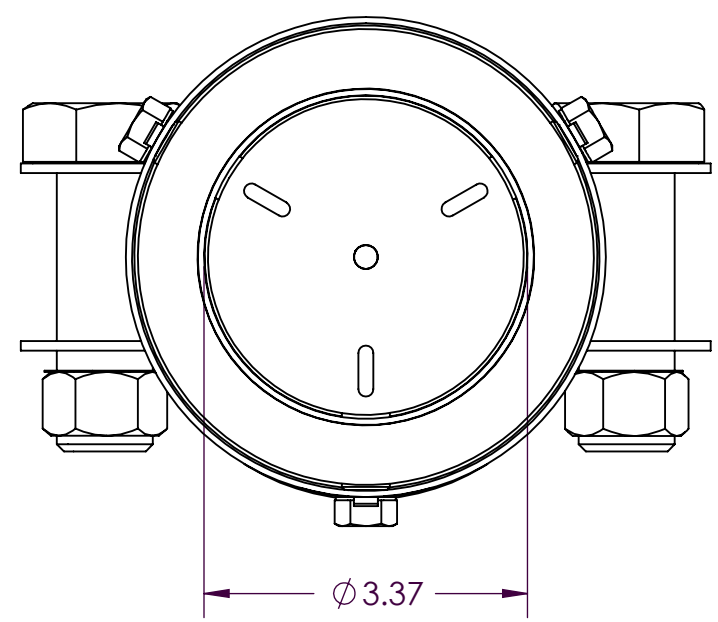
SECTION A-A



EXPANDED POSITION

CLOSED POSITION

SEE NOTE #1



ITEM NO.	PART NUMBER	DESCRIPTION	Qty.
1	28925	GUIDE- WET MUFFLER	3
2	50876	4.0" DIA. x 0.5" RING SEAL	1
3	48161	BULLET AND RING ASSEMBLY	1
4	hex finished bolt_ai		2
5	flat washer type b narrow_ai		4
6	48160	BAFFLE- SUB ASSY, LITTLE MUFFLER	1
7	48165	SEAL RETAINER ASSEMBLY	1
8	48120	4.5" CLAMP ON ASSEMBLY	1
9	50925	SPACER	3
10	hex nut_ai		2
11	41424	CAP ASSEMBLY 5" CAN	1
12	29416	CAN, 5x.065x6.13 POLISHED	1
13	36301	4.5 INCH DIAMETER BAND	1
14	38003	RETAINING RIVET	1
15	38032	3/8-16x.75 HEX HEAD SCREW	3
16	36303	ANTI-ROTATION TAB	3
17	50880	COIL SPRING 5.8 DIA. x 3.95" LG	1

NOTE:  
1. ROTATE INSIDE TUBE CLOCKWISE THIS END 1/3 REVOLUTION TO LOAD COIL SPRING. INSTALL MOUNTING BOLTS (3 PLACES) TO SECURE ASSEMBLY IN POSITION.  
2. APPROXIMATE TOTAL WEIGHT - 5.94 LBS

**Custom Marine**  
STAINLESS EXHAUST

UNLESS OTHERWISE SPECIFIED  
DIMENSIONS ARE IN INCHES  
DIMENSIONAL TOLERANCING:  
2 PLACE ±.03  
3 PLACE ±.005  
ANGLES ±1°

DO NOT SCALE DRAWING

DEPARTMENT  
MARINE

PREPARED  
JAK  
CHECKED  
ENGINEER  
01/09/06

CUSTOM MARINE INCORPORATED RESERVES PROPRIETARY RIGHTS TO THIS DRAWING AND THE DATA SHOWN THEREON. SAID DRAWING AND/OR DATA ARE CONFIDENTIAL AND ARE NOT TO BE USED OR REPRODUCED FOR ANY PURPOSE WITHOUT THE WRITTEN CONSENT OF CUSTOM MARINE INCORPORATED.

THIRD ANGLE PROJECTION

**CUSTOM MARINE INCORPORATED**  
NEENAH, WI

DESCR. 4.5" CLAMP W/5" CAN SS CAP  
SOUND ELIMINATION SYSTEM

SIZE C WEIGHT LBS 5.94 DWG. NO. 39112 REV. .

SCALE 1:2 MATERIAL: Material <not specified> SHEET 1 OF 1