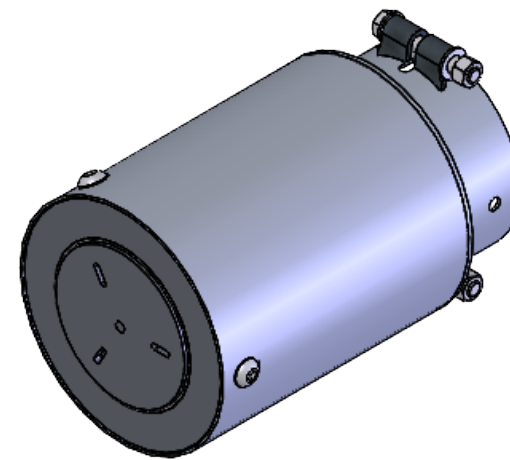
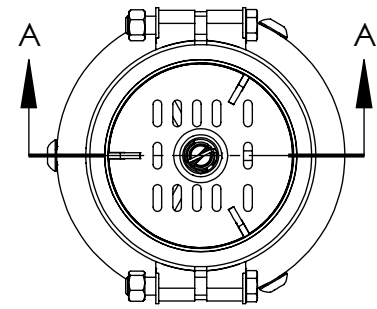
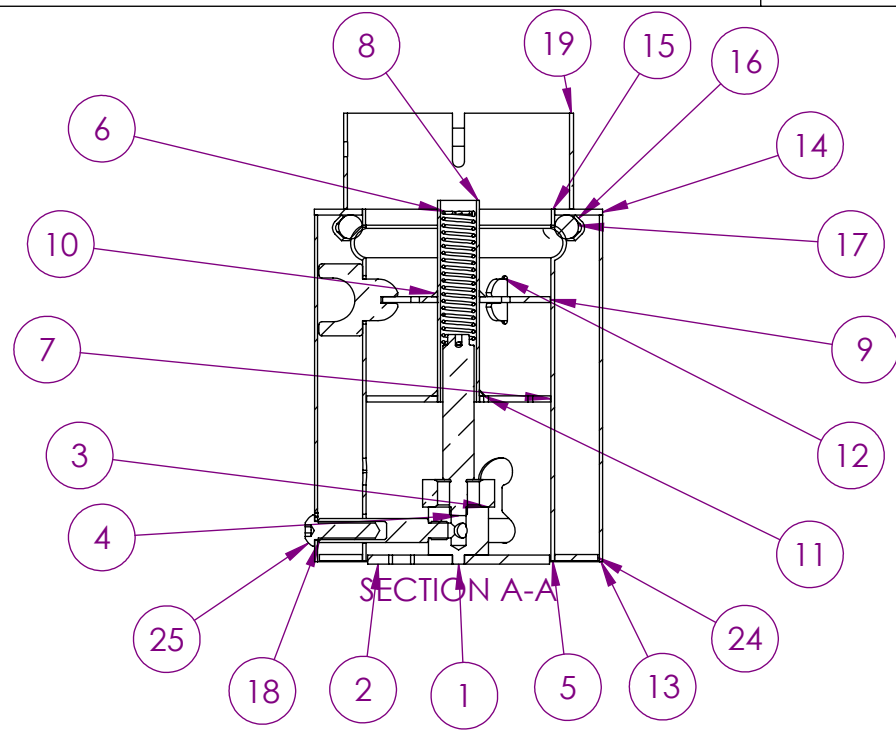
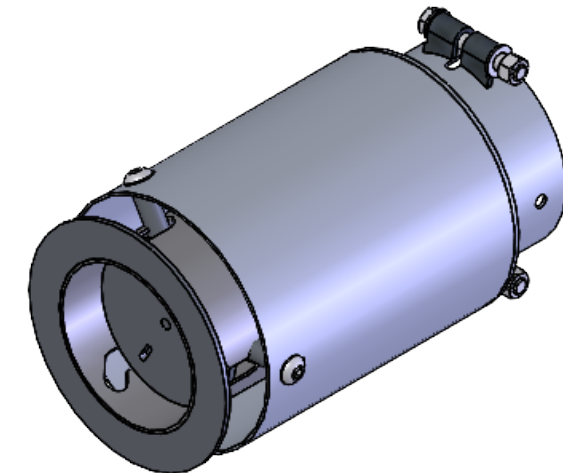


REVISIONS					
ENN #	REV.	DESCRIPTION	BY	CK'D BY	DATE

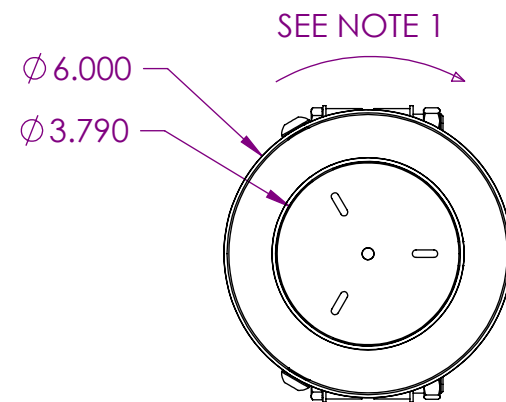


CLOSED POSITION

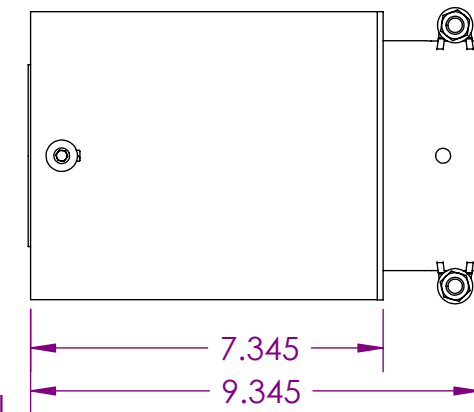


EXPANDED POSITION

ITEM NO.	PART NUMBER	DESCRIPTION	QTY.
1	50906	HEX, BAR ( 1.0" LG )	1
2	50897	BAFFLE 2- LITTLE MUFFLER	1
3	38034		1
4	50902	STEM .75	1
5	29336	CAN, 3.88 MACHINED	1
6	50880	COIL SPRING 5.8 DIA. x 3.95" LG	1
7	28905	BAFFLE 2- WET MUFFLER	1
8	29035	TUBE SHAFT, .875x.065x4.2	1
9	28895	BAFFLE 1- WET MUFFLER	1
10	bead7		1
11	bead6		1
12	28915	GUIDE- WET MUFFLER	3
13	29365	Tube- 6" O.D. x 7.225 x 0.065"	1
14	44400	RING- WET MUFFLER	1
15	44161	RING, 3 7/8 ID x 3/8 LG	1
16	44165	RING- O-RING RETAINER	1
17	50875	O-RING- SILICONE, WET MUFFLER	1
18	50905	STEM- WET MUFFLER	3
19	29385	ANGLED CLAMP END	1
20	38410	CLAMPING BRACKET	4
21	38240	HFBOLT 0.375-16x2.5x1-N	2
22	38100	3/8 WASHER	4
23	38960	HNUIT 0.3750-16-D-N	2
24	44227	RING, ROUND	1
25	38033	3/8-16x3/4"	3



- NOTE:
1. ROTATE INSIDE TUBE CLOCKWISE THIS END 1/3 REVOLUTION TO LOAD COIL SPRING. INSTALL MOUNTING BOLTS (3 PLACES) TO SECURE ASSEMBLY POSITION.
  2. APPROXIMATE TOTAL WEIGHT - 9.46 LBS



	CUSTOMER OR VENDOR NO.		<b>CUSTOM MARINE INCORPORATED</b> 312 FIRST STREET, NEENAH, WI 54956		
	PREPARED	JAK	06/09/05	DESCR. SOUND ELIMINATION SYSTEM	
UNLESS OTHERWISE SPECIFIED DIMENSIONS ARE IN INCHES DIMENSIONAL TOLERANCING: 2 PLACE ±.03 3 PLACE ±.005 ANGLES ±1°	CHECKED	.	.	SIZE B	
	ENGINEER	.	.	WEIGHT LBS.	9.46
CUSTOM MARINE INCORPORATED RESERVES PROPRIETARY RIGHTS TO THIS DRAWING AND THE DATA SHOWN THEREON. SAID DRAWING AND/OR DATA ARE CONFIDENTIAL AND ARE NOT TO BE USED OR REPRODUCED FOR ANY PURPOSE WITHOUT THE WRITTEN CONSENT OF CUSTOM MARINE INCORPORATED.			SCALE	1:4	DWG. NO. 39114
DO NOT SCALE DRAWING	THIRD ANGLE PROJECTION	MATERIAL: Material <not specified>		SHEET 1 OF 1	